

### *Caring, Creativity, Honesty, Perseverance, Respect, Responsibility*

#### COMING EVENTS

##### **WEDNESDAY 25 FEBRUARY**

8:10AM BREAKFAST CLUB  
EXTERNAL CANTEEN  
2:40PM STAFF MEETING

##### **THURSDAY 26 FEBRUARY**

8:40AM YEAR 4 – 6 SPORT  
(FACTION T SHIRT THURSDAY)

##### **FRIDAY 27 FEBRUARY**

8:40AM YEAR 5/6 HOSTING ASSEMBLY  
SCHOOL CANTEEN

##### **MONDAY 2 MARCH**

**NO STUDENTS AT SCHOOL TODAY – LABOUR DAY PUBLIC HOLIDAY**

##### **TUESDAY 3 MARCH**

5:30PM P&C AGM

##### **WEDNESDAY 4 MARCH**

8:10AM BREAKFAST CLUB  
EXTERNAL CANTEEN  
2:40PM STAFF MEETING

##### **THURSDAY 5 MARCH**

8:40AM YEAR 4 – 6 SPORT  
(FACTION T SHIRT THURSDAY)

##### **FRIDAY 6 MARCH**

SCHOOL CANTEEN

##### **TUESDAY 10 MARCH**

NEWSLETTER

*At Lake Monger Primary School, we recognise and respect Noongar as the traditional language of the Noongar people, the Traditional Custodians of this land. Our school is on Whadjuk Noongar Country, where the language has been spoken for tens of thousands of years and remains deeply connected to culture, stories and community.*

*Word of the week*  
**Kaya** (pronounced 'k-eye-ya')

*Kaya means 'hello' in Noongar.  
Kaya, everyone! Welcome to our classroom.  
Kaya Families, thank you for joining us today.*

*Bunuru is the Noongar 'second summer' (February-March) in southwest WA. It is the hottest, driest time of year, when white flowers bloom and families traditionally spent time near rivers and the coast to stay cool and gather food.*



#### Dental Van

Please contact the Mobile School Dental Therapy Van on 0408 926 794.



Dear Parents, Students and Community Members

#### SCHOOL ACTIVITIES

There was great excitement at Lake Monger Primary School, especially so for our football team members, when 3 State of Origin players, Trent Rivers, Aaron Naughton and Sam Taylor visited on Thursday 12 February. The players met the children from 3 classes and spent time talking to the children about their pathway to their football career as well as answering considered questions from the children. The children received a signed football card or poster as well having an opportunity for their own football memorabilia to be signed. Thank you to Mr Justin Douglass for making the arrangements for the visit.

#### CHANGE TO THE CONFIGURATION TO THE SCHOOL DAY

The Department of Education has recently announced a change to the configuration to the school day to allow schools up to 2 days per year for teachers to meet with parents for the purpose of reporting.

After consulting with our school board, (minutes of the meeting are available on the school website or a paper copy from the front office) Lake Monger Primary School will hold one day for reporting to parents in 2026 on **Tuesday 31 March between 8:40 am – 5:00 pm. Please add this date to your Term 1 planner. The normal timetable will not be provided at school on this day and therefore parents will need to make alternate arrangements for their children on this day.**

This full day session will provide time for parents to talk to teachers about their child's classroom progress as well as their progress in Health and Physical education, Drama, Music and Italian.

We have selected Tuesday 31 March for reporting to parents because this is the last week of Term 1 and children will then have the majority of Term 2 to add to their learning prior to written Semester 1 reports being available to parents at the end of Term 2.

We are intending to offer 3 types of reporting sessions to parents, either face to face, telephone or on line. Meetings are for up to 10 minutes. Please contact the school if you are unavailable to attend on this day.

Bookings will be open on line from Wednesday 4 March to Thursday 26 March closing at 3:00pm. A link and information about how to make a booking will be published in CONNECT on Tuesday 3 March.

Please contact Ms Tomlinson or Ms Rennie if you have any questions.

#### CHANGES TO THE END OF SEMESTER REPORTS

Changes to end-of-semester reporting for Pre-Primary to Year 10 students are now in effect, as you will see in the Semester 1 reports at the end of Term 2.

The Department of Education has introduced consistent reporting requirements for all schools. These changes are designed to make reports meaningful and easier to understand and consistent across all public schools. This change has been complemented with increased opportunities for parents to meet child's teacher to enable greater engagement and in-person feedback.

End of semester reports will continue to highlight your child's strengths and achievements. They will include a clear summary of your child's learning.

#### The Pre Primary to Year 2 report will provide:

- an achievement descriptor for each learning area studied
- extra information about progress in English and mathematics
- information on your child's personal and social learning, and their attitude, behaviour and effort
- an overall teacher comment about your child's progress and achievement, including English and Mathematics

### Years 3 to 6 reports will provide:

- a grade for each learning area studied
- extra information about progress in English and mathematics
- information on your child's attitude, behaviour and effort
- an overall teacher comment about your child's progress and achievement, including English and mathematics

### YEAR 6 NEWS

Thursday sport for children in Years 4 – 6 has commenced. The children in Years 4 - 6 are rotating through the different sports on offer, cricket, T ball, tennis and badminton. If your child has a faction T shirt, they are most welcome to wear this to school on Thursday's.

The candidates for the student council positions will present their speeches on Thursday 26 February. Six student councillors who will join our schools captains, Selden Kunzang and Meshv Patel on the student council. The successful candidates will be announced at the assembly on Friday 13 March

The faction captain election will be held on Thursday 5 March. The 6 faction captains will be announced on 13 March.

### BUILDING NEWS

The new basketball court is almost ready for the children to use. Grass was laid on Friday 20 February around the perimeter of the new court and this area will be fenced for approximately a month to allow the new grass to establish. Please find attached a map outlining all the fenced areas of school and the dates the fencing will be in place.

### CURRICULUM DELIVERY

In early Term 1, the children in Years 3 and 5 are being supported with their preparation for the NAPLAN testing. Teachers have engaged in professional learning that includes reviewing and planning based on individual and whole school NAPLAN data.

Children in Years 3 and 5 have brought home a brochure for parents that outlines NAPLAN testing. NAPLAN testing will be held from the 11 – 23 March.

If you have any queries regarding NAPLAN please email your child's classroom teacher, or contact Ms Tomlinson or Ms Rennie.

### NAPLAN INDIVIDUAL STUDENT REPORT

The NAPLAN report shows four levels of achievement:

- Exceeding
- Strong
- Developing
- Needs additional support

The descriptors for each category will make it clear to parents what their child's literacy and numeracy skills are at the time of NAPLAN testing.

Student reports will continue to show the national average and the range of achievement for the middle 60 per cent of students in their year level.

### ATTENDANCE

As parents are very aware, children have to be at school every day in order to learn. All absences require a reason and we really appreciate parent support with attendance. Please advise the school when your child is absent and the best way to do this is by sending an email to [lakemonger.ps@education.wa.edu.au](mailto:lakemonger.ps@education.wa.edu.au) or phone (08) 9205 5400.

Holidays during school time should be avoided.

### ON ENTRY ASSESSMENT – PRE PRIMARY

Pre Primary parents have received information about the On Entry assessment in literacy and numeracy, which is for all Pre Primary children in Western Australia. The assessment is conducted by the children's classroom teacher. If Pre Primary parents have any queries, please see your child's teacher.

### KISS AND DRIVE

Thank you to our parents for using the Kiss and Drive as outlined in previous communication. This facility is to be used when dropping off and picking up your children, allowing a 2-minute window. If you are requiring to park your car, parent parking bays are available further along Dodd Street.

### BREAKFAST CLUB

The Breakfast Club commenced on Wednesday 11 February. The club is open each Wednesday morning from 8:10am in the undercover area. Thank you very much to our volunteers who run the program, Mrs Pamela van der Meulen coordinator, Mrs Babs Tuzee and Mrs Margaret Wolfe. The children and volunteers enjoy the lovely atmosphere the Breakfast Club provides.





## ASSEMBLY

Thank you to Year 6 students and Mrs Megan Metcalfe for hosting our first assembly for the year. The next assembly (hosting) will be held on Friday 27 February commencing at 8:40am and presented by Ms Emma Peet and Ms Eleanor Whyte's Year 5/6 class. Congratulations to the following children who received awards:

### Student of the Week



Y1	Ariel Nadji Evelyn Briggs Mantra Patel Margarette Holtze
Y1/2	Sonam Wangmo
Y2	Archer Stoyel-Wiggens Pranaav Achari Saviona Subba
Y3	Truc Linh Nguyen Sophia Zampaglione Tshering Yutsho Esan Basnet
Y4	Karma Yangki Hanna Bandehagh
Y4/5	Kyan Patel Vibhuti Patel
Y5	Tenzin Pelmo Subeera Lamsel
Y5/6	Kaitlin Lim Yue Hyun Lee
Y6	Yug Patel Vaibhav Chhetri

### Work of the fortnight

Y1 Purple	Mason Bright Rahi Patel	Number Work Writing Recount
Y 1 White	Ari Wilson	Line Artwork
Y1/2	Numa Rai	All About Me Work
Year 2 Aqua	Aria Howat	'Drawing
Y2 Orange	Loday Dorji Jigme Wangmo	Magical Yet Artwork
Y3 Teal	Rigzin Dorji Dragpa Gyeltshen	Spelling Test
Y3 Lime	Luna Izuma	Spelling Test
Y4	Sonam Jatsho Keya Patel	Art
Y4/5	Kyan Gordon	Maths
Y 5	Yonten Rangshar Yeshi Phuntshok	Getting to know me work
Y6	Angela Eudela Inuka Bandara	Burger Artwork

#### Reading Eggs -

Kinga Tenzin, Damon Fern, Felix Brosens, Anvee Babbar, Pindarika Euday, Essa Watkins, Kunga Lekzom Jamtsho.

#### Mathseeds-

Khushi Dhokiya, Felix Brosens, Essa Watkins, Saviona Subba, Alysia Mall.



Mantra- Yr 1 White	Responsibility
Choeying- Yr 1 Purple	Responsibility
Yukt - Yr 1 White	Perseverance

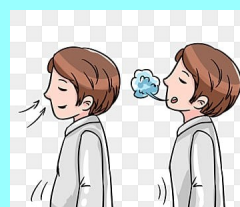
**Please view the children's work on display in the front office foyer, next time you are in the school**

#### Sunsmart Message



When buying a sunscreen, choose one labelled **BROAD SPECTRUM SPF 30+** and water resistant. This means the sunscreen will filter both UVA and UVB radiation.

#### Waterwise Tip



Humans lose up to 500 ml of water daily from breathing alone.



**Drink Up**

### **STUDENT NEWS**

Congratulations to Leah, Laura, Matilda, Audrey and Sophia for the food and drink stall they recently held to raise money to donate to the Tasmanian devils. The children advertised their stall in their local area and raised \$100 for the cause. Well done to the girls.

Congratulations to Izzy Workman, past student from Lake Monger Primary School, on his selection into the U21 State extended squad for hockey.

### **FORMS**

All families have received the Parent and Child Volunteer Declaration form link last week.

Families new to school have received a link to complete the online consent forms.

### **EMAILING THE SCHOOL**

To ensure a speedy response to your email query, parents are asked to please use the email address below –

**[lakemonger.ps@education.wa.edu.au](mailto:lakemonger.ps@education.wa.edu.au)**

### **BUDDY CLASSES 2026**

Buddy classes for 2026 are as follows:

Kindy/PP	Year 5	Year 1/2	Year 6
PP Blue	Year 3 Lime	Year 2 Aqua	Year 5/6
Kindergarten	Year 4	Year 2 Orange	Year 3 Teal
Year 1 White	Year 4/5		

### **PEANUT / NUT ALLERGY**

We have students in the school with allergies to peanuts and/ or nuts. The allergy can cause the children to have an anaphylactic reaction. To minimise the risk we ask that parents/ carers do not include peanut paste, nuts etc in their child's morning tea and lunch. This would be very much appreciated; however we understand this is not always possible.

Thank you to parents involved for checking the expiry date on their children's medication that is used at school. (eg: epi-pens, asthma puffers etc.)

### **CRUNCH AND SIP**

Thank you to our parents for providing either a small piece of fruit or vege for Crunch and Sip time, which is held daily for all children in Years 1 – 6.

### **SAFELY TO AND FROM SCHOOL**

With the start of the 2026 school year it is timely to remind children about safety to and from school.

Here are some suggestions to help your children stay safe:

- always travel in a group
- walk on the right hand side of the road to face oncoming traffic
- wherever possible, leave space between you and the roadway
- stay in view—avoid going into areas that are hidden (such as parkland bush or behind shopping centres)
- be alert—earphones and headphones can reduce your awareness considerably
- if you have a mobile phone, have it turned on and ready to dial an emergency number
- if passing car stops nearby, never get too close
- run from a situation if you feel at risk
- give this advice to your brothers and sisters, especially if they are younger
- report suspicious behaviour to your parents, school and the police
- if you can get to safety, try to photograph or remember the number plate of the car

### **BIKES, HELMETS, SCOOTERS**

It is advised that children who ride to school lock their bike etc. for safe keeping during the day.

Children who ride a bike to school MUST WEAR A HELMET.

### **DOGS**

Due to health and safety reasons dogs are not permitted on school grounds.

## CONTRIBUTIONS AND CHARGES 2026

Thank you very much to parents who have paid their voluntary contributions already. We have had many parents to date pay the voluntary contribution of \$60 per child and this is greatly appreciated. These funds support learning areas in the school as outlined in the Voluntary Contributions and Charges letter sent home to parents at the end of November last year.

In 2025 the total of contributions collected from Kindergarten to Year 6 was 79%.

## P&C NEWS

Thank you to our P&C for organising the welcome picnic. It was a most enjoyable evening and thank you to our families who were available to attend the event.

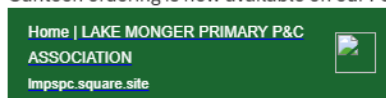
The P&C AGM will be held on Tuesday 3 March commencing at 5:30 pm.

The 2026 Rainbow Ninja Fun- Run will be held on the school oval commencing 1:30 pm on Friday 27 March. Please refer to the P&C website for event and sponsorship information. A flyer about the event is included in this newsletter.

Uniform orders are to be collected from the office. Parents will receive notification that their uniform order is ready for collection.

## FRIDAY INTERNAL CANTEEN AND UNIFORM

Canteen ordering is now available on our P&C website, link below. This saves you the cost of flexischools fees and reduces the paperwork for canteen volunteers.



Just go to 'canteen'

Ordering through flexischools will be phased out over the next few weeks.

Look out for new and exciting lunch and recess items over coming soon.

This website is also where you

\*Order uniforms,

\*Join your class parent chat groups (WhatsApp)

\*Get your tickets/info for P&C run events.

To save our P&C website as an App on your device

### **For iPhone & iPad (Safari)**

1. Open website in Safari
2. Tap the Share button (square with an upward arrow) at the bottom of the screen.
3. Scroll down and select Add to Home Screen.
4. Name the shortcut LMPSP P&C and tap Add.
5. *Tip:* If you are on iOS 26 or later, ensure "Open as Web App" is toggled on to ensure it opens without a browser address bar.

### **6. For Android (Chrome)**

1. Open Chrome and navigate to your Square website.
2. Tap the three-dot menu icon in the top right corner.
3. Select Add to Home Screen.
4. Name the shortcut and tap Add.

Uniform orders must be placed online via our P&C website, link below.



Once your order is complete, it will be available for collection from the school office by either parents or students.

Please ensure you have received your 'delivered' confirmation email before coming in to collect. Orders will no longer be delivered to the students classrooms.

For all uniform enquiries please email our volunteers at

[Lmpsuniforms@gmail.com](mailto:Lmpsuniforms@gmail.com)

Thank you for your understanding

# Lake Monger Primary School Construction Management Plan

## SCHOOL TIMES

Classes commence  
 Morning Recess  
 Lunch  
 Classes dismissed

8:40am  
 10:30am - 10:50am  
 12:40pm - 12:50pm (Eating)  
 12:55pm - 1:25pm (Playing)  
 3:05pm (WEDNESDAYS 2:30pm)

The school must be notified prior to any vehicles traversing their land during the school day. This includes the space between the two blue (B) areas. And no movement of vehicles in this area during recess and lunch times. A spotter will be required



## Legend:

- Site fence with shade cloth
- Site compound
- Direction of vehicle access/ egress

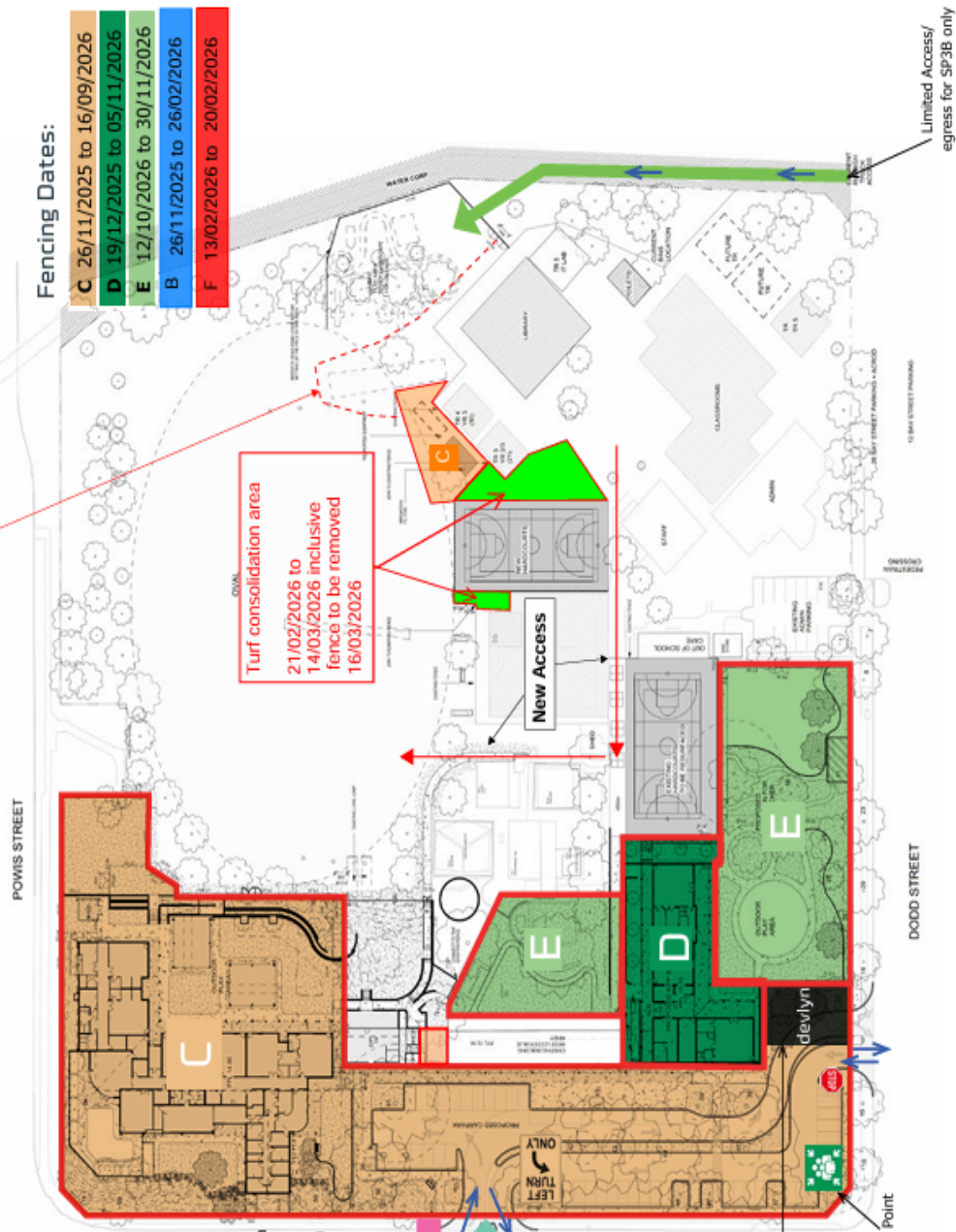
## Delivery Times:

To minimise traffic congestion during school drop-off and pick-up times, deliveries to and from the project will **not** be permitted during the following hours:

- 7:30am - 9am
- 2:30pm - 3:30pm (Mon, Tues, Thurs, Fri)
- 2pm - 3pm (Wed)

Access to the site office compound area will be via Dodd Street

## Indicative Site Compound Layout:



# RAINBOW NINJA FUN RUN

LMPS P&C Fundraising Event



Scan QR  
Payment link for  
fundraisers



## EVENT DETAILS |



**Date:** March 27th



**Time:** 1.30pm



**Location:** LMPS Oval



## HOW TO PARTICIPATE

- Students are encouraged to ask family and friends to sponsor them to complete the course.
- If you prefer not to fundraise, families are asked to support participation with a \$15 donation, if they are able.
- To help raise funds, simply share the payment link with family and friends.



## OBSTACLE COURSE HIGHLIGHTS:



Holi colour powder • Foam cannon • Slime pit • And more!



## PRIZES & REWARDS

- Every student who raises funds receives an exciting prize pack
- The class with the highest average funds per student wins a pizza & ice cream party
- Top 3 individual fundraisers win a champion medal and the chance to slime Mr Douglass



## EASY FUNDRAISING IDEA

Ask 5 people to donate \$5 = \$25 raised.  
If every student raised \$25, we could raise \$7,500!

## COMMUNITY NEWS



<b>CHURCHLANDS</b> VISION	⇒ Churchlands aims to develop a school community which encourages personal, social and environmental responsibilities. ⇒ The school is committed to providing a caring and supportive environment that challenges students to achieve personal excellence in all endeavours and to be active citizens of the local and global community.
<b>SCHOOL TOUR</b> 27 FEBRUARY 2026	⇒ Friday 27 February   9.15am for a prompt <b>9.30am start</b>   Concert Hall ⇒ Meet Principal, Mrs Kate Grayson. Listen to her overview of the school's vision and values and the instructional practices and learning opportunities for students. ⇒ Small group tours, each led by a school leader   Chance to ask questions. ⇒ Light refreshments provided at the end of the Tour.
<b>TOUR BOOKING</b> Year 4, 5 and 6 Families	⇒ Family members of primary school students in Years 4, 5 & 6 are invited to attend our tour. ⇒ Bookings are essential to ensure we have sufficient literature and guides are available for each tour <a href="https://www.churchlands.wa.edu.au/new-students/school-tour">https://www.churchlands.wa.edu.au/new-students/school-tour</a> .

## Disability Gateway website

The Disability Gateway is a free initiative by the Australian Government and is designed to support people with disability, their families and carers in accessing information and local services.

Disability Gateway offers:

- personalised one-on-one support via phone
- free information and referrals to services Australia-wide
- assistance connecting with resources people can access in their local area
- culturally safe, respectful and confidential service delivery – people can choose how much information they share and remain anonymous if they wish
- referrals for advocacy and legal rights information.

The intention is that the Disability Gateway will help to enhance the range of supports available to people with disability, their communities and service providers.

You can click on the link below to access the Disability Gateway website:

[www.disabilitygateway.gov.au](http://www.disabilitygateway.gov.au)

Further information is provided in the attached Consumer Fact Sheet which can be provided to students and their families.

Click here to - [view the Notice >](#)

If the link above does not work, try copying the link into the address bar of your browser.

<https://connect.det.wa.edu.au/redirect/cmt/542752851/announcements?viewNotice=6678460156>



# YMCC JUNIOR HOCKEY

**2026 REGISTRATIONS  
NOW OPEN FOR ALL AGES**

**Year 1 to 4 : club and school based  
teams play at Perry Lakes every Sat  
morning. Contact:  
subjuniors@ymcchockey.org.au**

Kindy and PP: Sat morning at Perry Lakes  
skills and games sessions.  
Contact: minkey@ymcchockey.org.au

Year 5 to 12: Teams for all ages. Grading  
begins March. See our website for info.  
Contact: juniors@ymcchockey.org.au

Very successful JUMP skills development  
program open to all juniors

**SEE OUR WEBSITE FOR ALL INFO:  
WWW.YMCCHOCKEY.ORG.AU OR  
EMAIL: JUNIORS@YMCCHOCKEY.ORG.AU**



## *Free Kids' Squash Clinic*

Who: Ages 6-14. All skill levels welcome!

Time: Saturdays at 1:00 PM to 2:00 PM

March 7-28

Location: Cambridge Squash Club

Why: Learn Squash, Have Fun, Make Friends

**Spots are limited - Sign up using the QR  
code below!**



About Me

Ranked #6 in WA

Questions? Contact Me!

hawkbergquist@gmail.com

+61 403898093

# BETTER HEALTH PROGRAM

## Want to prepare your kids for a healthier future?

The Better Health Program is a **FREE**, online and flexible program for you and your 6-12 year old child.

### The program includes



**Health coach support** – Families will be paired with a qualified health coach who will take the time to learn about their health goals and provide personalised support over 10 calls that last up to 30-minutes each. These calls offer flexible timing so busy families can still get support.



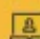
**Online learning modules** – Families also get access to a library of bite-sized learning resources and fun online activities to enjoy with their child, and will receive a voucher for completing the program.

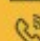
INCLUDES  
**FREE**  
RESOURCES!

Sign up today



Learn more

 [betterhealthprogram.org](https://betterhealthprogram.org)

 1300 822 953



Government of Western Australia  
Department of Health

Powered by  
**BETTER HEALTH CO.**

## Hello February!

This February at TheirCare has been such a fun and heartwarming time for everyone! We spent time chatting about kindness and what it means to be a caring and supportive friend. The children loved sharing their thoughts and finding simple ways to show kindness each day. We also got creative with lots of craft activities and enjoyed building together during our Lego sessions. One of the highlights was our cooking activity, where we made sushi and explored new flavours while learning about different cultures. It's been a wonderful few weeks full of laughter and creativity.



**FLIPPIN' FUN**  
**PANCAKE PARTY!**  
**TUESDAY 17 MARCH**

We're mixing up Shrove Tuesday and St. Patrick's Day cheer! We'll be flipping pancakes, enjoying green crafts, making good luck charms, and playing silly games. Join in the fun during after-school care, at no extra cost to families. To book visit [TheirCare.com.au](http://TheirCare.com.au)

## Check your enrolment is up-to-date, so you're ready when life 'happens'!

You know the feeling – stuck in traffic, an unexpected meeting or appointment, or managing the unexpected! We are ready to support your family with flexible, last minute bookings!

Jump into our booking system and check all your enrolment details are up-to-date, so that we are ready to take your before or after school care booking. There are also some really fun activities planned for throughout Term One that you won't want to miss!! Dive in at [theircare.com.au](http://theircare.com.au) and click the 'Book Now' button.



**TheirCare's**  
**Autumn**  
**2026**  
**Holiday Program**

**iSpyKIDS**

Something exciting is coming this Autumn...  
**iSpy Kids!**  
Packed with mystery, curiosity and fun filled adventures, it will be one school holiday program you won't want to miss! Bookings open soon...

**CONTACT SERVICE:**

+61 407 268 472

[lakemonger@theircare.com.au](mailto:lakemonger@theircare.com.au)

**TC HEAD OFFICE:**

1300 072 410

[info@theircare.com.au](mailto:info@theircare.com.au)

[www.theircare.com.au](http://www.theircare.com.au)

